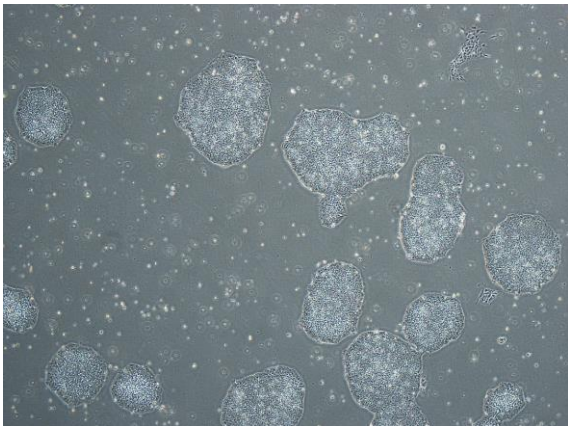
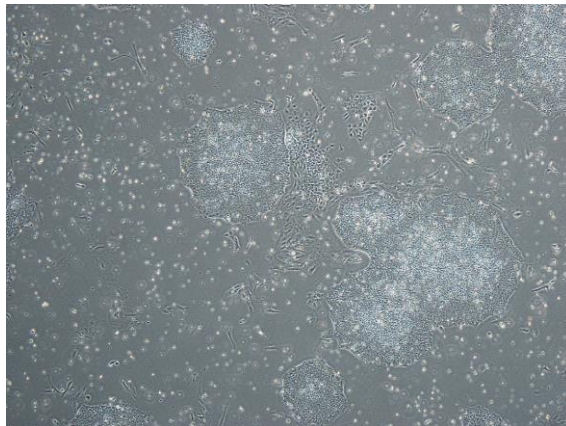


## 【 CiRA-j-1206 】 Morphology of iPSC colonies

CiRA-j-1206-A: passage-2



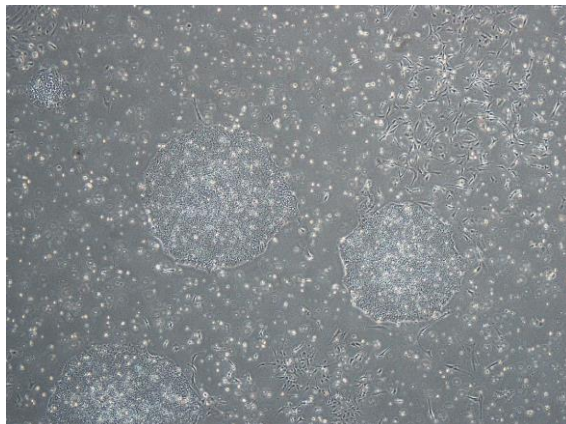
CiRA-j-1206-B: passage-2



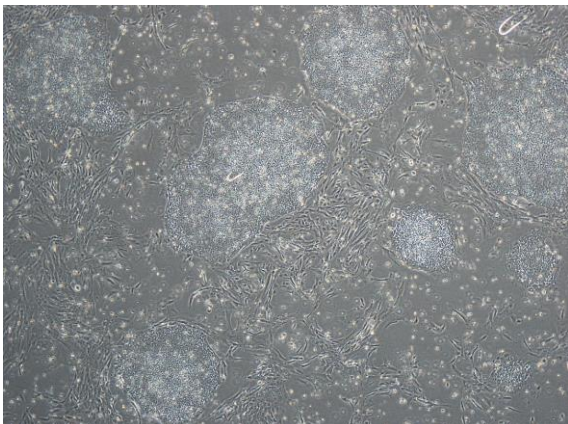
CiRA-j-1206-C: passage-2



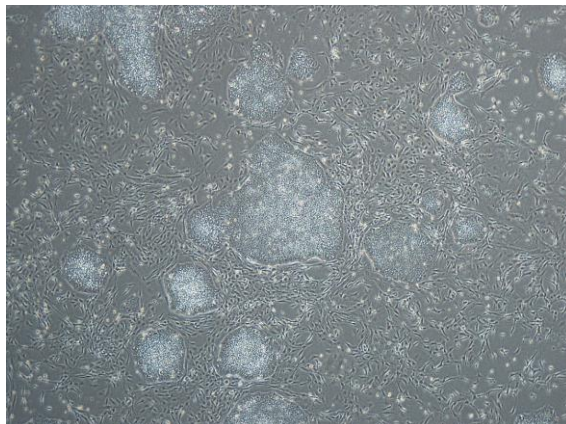
CiRA-j-1206-D: passage-2



CiRA-j-1206-E: passage-2



CiRA-j-1206-F: passage-2



( All images were captured at 4x magnification )